

# Bettio

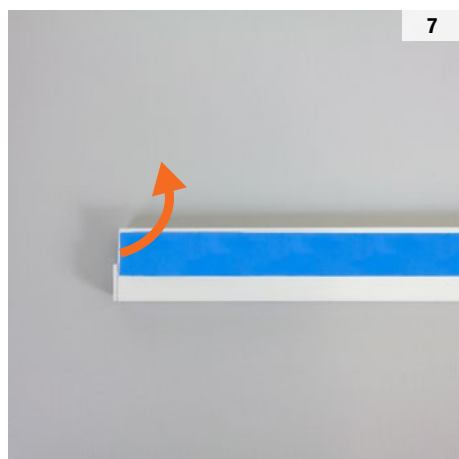
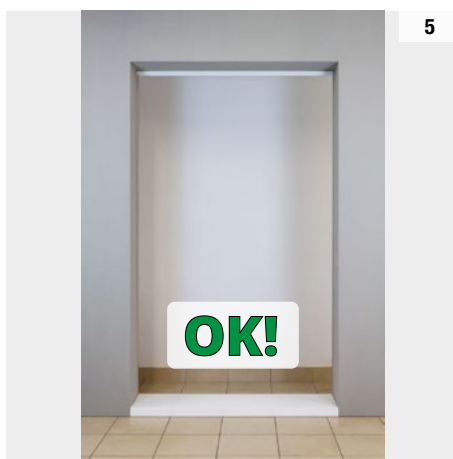
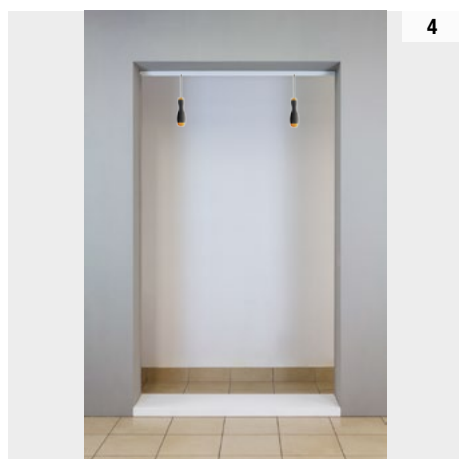
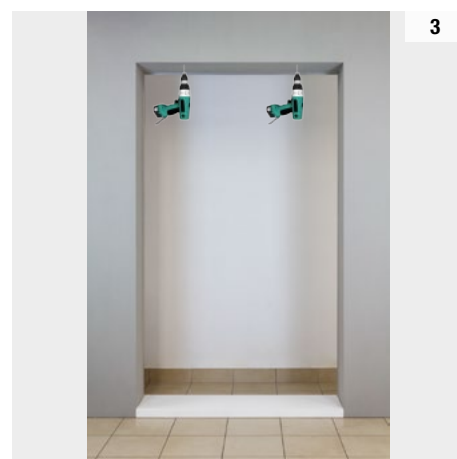
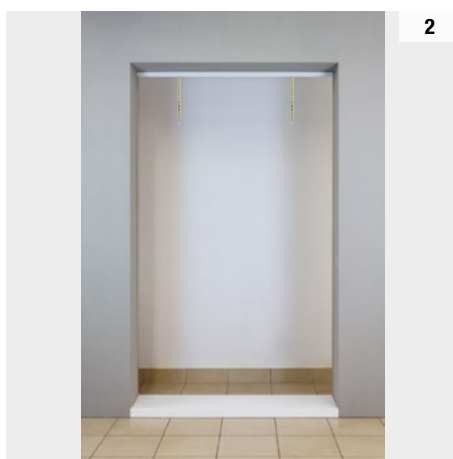
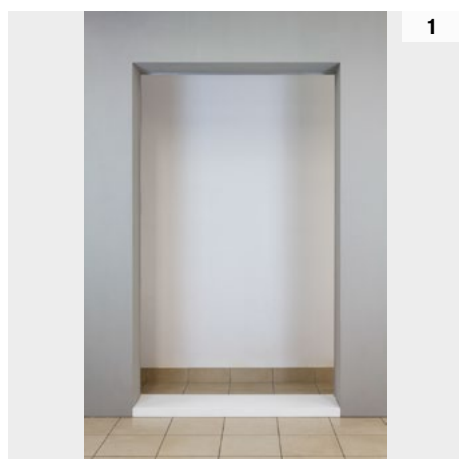
zanzariere *flyscreens*

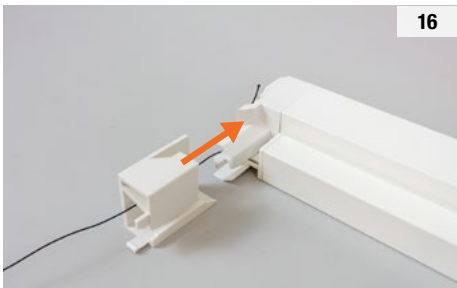
ISTRUZIONI DI MONTAGGIO

# VIRTUS

by Bettio

1 BATTENTE CON VITI





PARTE ALTA:  
Utilizzare la prolunga corrispondente alla testata che  
andrà posizionata in alto.  
Se in alto si ha la testata SX scegliere la prolunga SX.  
Se in alto si ha la testata DX scegliere la prolunga DX.

